

# SOUTH ISLAND FORMULA FORD

COMMITTEE : A.Robertson, M Elder, R.Toshach, M.Smit, S.Spencer-Bower, R.McKenzie, R.Low, D.Christensen, G.Love, L. Low ,N.Barclay, D.Wilson, I.McKeown (Technical subcommittee)

JULY 2021

Hi Everyone and welcome to a “just in time” July newsletter. I usually like to comment on Indy and Supercars, but it all seems a while ago and the Olympics dominate at the moment. Just the same the British GP is still talked about and THAT crash in particular. Suffice to say if F1 was run under the same rules as the South Island Formula Ford Club, Max (outside) wouldn’t have a leg to stand on, and even if Lewis lifted, turning across was a risk too far. I’ll say this for him though; to experience 51gs into the tyre wall and walk away is absolutely astonishing.



Recently I watched a round of the Australian Motocross Championships. Interesting in that they are sponsored by Penrite, and one of the TV interviewers was Riana Crehan, from Supercars and Will Davison’s wife. Asked all the right questions too. The other noticeable feature was the fitness of the top riders. Nothing compares to top level motocross, and to see the winning riders fronting up to an interview moments after finishing,

barely puffing, was impressive.

Lots happening on the home front. Two of the three Scholarship cars have been placed and at the time of writing the Jeremy Shaw Stealth will be piloted next season by Cameron Freeman who has driven the wheels off a VD92 for the last couple of seasons, and really deserves a chance in a front running car (right)



The Les Singh VD92 (left) will be driven by 14yr old Blake Knowles, who will graduate up from GoKarts. We have seen Blake at the ‘Have a Go” days and like most GoKarters, he handled the transition into a F1600 very well. The scholarship programme is a great experience for newbies in that they can learn the ropes progressively.

V8 SUPERDRIVE

Motorsport Solutions  
New Zealand

COLVILLE SIGNS  
0274324771

CANTERBURY MOTOR RACING SCHOOL

NEWFIELD AUTOS  
CHALLENGE

Evolution  
Motorsport

CROSSLINK  
KIWI MOTORSPORT

# SOUTH ISLAND FORMULA FORD



The South Island Historic Formula Ford Sub-committee held its first meeting recently. The Historic series will run under the current South Island sanctioned permit, and will be included in our Technical schedule and Articles. There will be a four race series for the first season, on the following dates : Ruapuna 17/10/21

Ruapuna 28/11/21

Levels 12 & 13/2/22

Teretonga 19 & 20/3/22 (also final SIF1600 round)



The initial indications of interest have been encouraging, but we are going to send out a survey to get a better indication of numbers, and that will be the acid test. There are three Class 3 cars for sale in the classifieds, and I have been told of another two by the owners who are still going through a weaning process

The initial survey has been sent out to the SIF1600ers with an encouraging response. Twenty-seven of you have indicated you will do the entire SIF1600 series. Twenty-eight have indicated they will do the National Championship Super Round at Highlands, and between five and eight of you will do selected rounds. At this early stage we won't have a grid at any circuit under thirty. The interesting thing is that the intended rate of full participation has increased dramatically, but the overall number of participants has remained relatively static at forty to forty-two. The committee would like to think that an emphasis on cost containment is a factor in the increasing level of series participation.

And speaking of cost containment, the commitment of the Hampton Downs Academy to supporting the National series, especially with a \$40,000 travel fund, is a God-send. This fund is for Northerners travelling south and visa versa, and will work wonders in maximising the grid. The Super Rounds will not be cheap...\$20,000 + per round, televised, and it is paramount to get a full field. The target is an entry fee of \$500, so we need forty competitors at each Super Round to achieve that. Very skinny stuff, but little if any travel expenses, gets rid of the Strait bogey and gives us every chance. And an early warning...when the Speedworks dates are finalised, book your accommodation for Highlands very early !



The SIF1600 AND National champion, James Penrose recently attended the Elite Motorsport Academy in Dunedin along with several others. The course itself is an intense week full of challenges designed to progress the individual's career aspirations. Interestingly each participant is funded to advance their continued development in a particular area where improvement is most needed over the following twelve months. The Academy participants are given a preliminary pass mark after their week of rigours and James came out on top ; excellent and our warmest congratulations.

V8 SUPERDRIVE



NEWFIELD AUTOS  
CHALLENGE !



# SOUTH ISLAND FORMULA FORD



One of the jobs I have down here is to manage the numbers register. There are times when this is challenging, especially when it comes to breaking the news to people that their favourite number that has been on their GoKart, and pushchair and pram probably, is allocated to someone else, and no, they can't have it ! Funny old thing is that, after the initial ructions, people find that the car goes perfectly well with another number stuck on and that, at the end of the day, is what counts. As a matter of interest we are down to about six unallocated numbers between 0 to 100, which should be enough for this coming season, but inactive numbers will come under the blowtorch after that I suspect. And just to reinforce the process, the number is allocated to the driver, not the car, so if you have a number of cars that you only drive, you should have one number.

The first batch of Yokohamas are in the country, and a proportion are in Christchurch. The ordering and payment details will be in this month's Chairmans Corner and will be a regular notice in the "Info" section. There will be some base-line advice on where to start as far as setup is concerned, so the advice is to start there and watch those tyre temps across the contact patch. As far as ratios are concerned, the tyres under-gear the car slightly, and at Ruapuna the cars were pulling 200rpm (3-4%) less at the end of the straight. The Aussies comment was that the competitors that wanted to run at the pointy end, changed ratios to optimise performance, but the weekend warriors stayed with what was in the box until they (the gears) were worn out.

The E-car is progressing nicely. The team now have a motor, inverter and chassis. If you look hard you can see the motor placed in the engine bay under the orange sheath. The inverter that is beside the rear wheel goes on top of the motor and the batteries will go in the space between the motor and the firewall. There is also quite a space where the fuel tank was. The motor and inverter are water cooled, albeit rather modestly in comparison to an internal combustion engine, so the original radiators may still be used, but such things as the gear linkage, fuel tank, surplus electrical circuits, the air scoop on the engine cover, the clutch lines and pedal assembly have all gone.

Importing the car from Australia was an interesting exercise. It is a Swift SC95 once driven by Marcus Ambrose. In very nice order, the car was NZ\$15,000 in Australia. Would you believe it there were an additional 29 charges to pay, totalling \$7615 before it could be collected from the Mainfreight depot in Christchurch. That is ok given what it is for, but if it was to stay conventional, by the time correct ratios, MSNZ manifold, cam and flywheel are factored in, which would be about \$4,000, the total cost of the car would be \$27,000, which is about their value here. The message is buy very cheap or very good !



V8 SUPERDRIVE





Jacob Douglas is presently in the US testing intensively with Gary Orton's Kiwi Motorsport F4 team. The intention is for the SIF1600 Rookie of the Year to come back for a TRS campaign, and then if the stars line up, head back Stateside.

Quite a programme and we wish Jacob all the best.

## CHAIRMAN'S CORNER



Well Racers not sure where July has gone. Yokohama Tyres have just arrived in Auckland and will be available later in the week. We have a welcome to Yokohama document almost ready to go. How to order your tyres will be in that and we have set up a tyre trading company, South Island Direct Limited which will deal with all sales. Ordering can be done via email at :

[southislanddirect@gmail.com](mailto:southislanddirect@gmail.com)

An official ordering form will be in with the Yokohama documents. GST invoices will be supplied for all sales these will need to have a commercial address for delivery, which remember is included in the price of \$989.00 per set. Individual tyres can be purchased @ \$247.25 each including GST.

We are limiting sales to two sets each competitor at this stage until the bulk of the tyres arrive in late September. Remember these tyres did over 600kms in testing so they won't wear out in a hurry. Set up guidelines are in the document. We found our test cars needed a bit more camber front and rear but after that both our test cars lapped the same as on Avons. No changes were made to gear ratios, so the engine was working in a different rev range than before; approx 200 rpm lower than previously. I would make the suggestion that you make some camber changes then get out and do some laps before thinking of ratio changes. If you wish to order tyres, in the short term please email the quantity you require and who to make the invoice out to, along with delivery address to [southislanddirect@gmail.com](mailto:southislanddirect@gmail.com) An invoice will be sent by return email and once paid, your tyres will be dispatched.

You may have heard the news that Tony Quinn and the Hampton Downs Academy have formulated a fantastic support package for both the Regional series and National Championships. The Regional series winners will receive a test in the FT50 cars at Hampton Downs and the pole setters from qualifying at each Regional round will be awarded \$500.00 for their achievement.

Our National Championship winner will receive a test in the FT60 in recognition of their efforts. Pole setters at the National Super Rounds will receive a very impressive \$1010.10 for setting the pace, again from qualifying.

V8 SUPERDRIVE



The introduction of a travel pool fund of \$40k from Tony to support competitors who travel to both National Super Rounds will ensure the grids will have some very tough competition throughout the field in all classes. We thank Tony and the Hampton Downs Academy for the investment in our category.

Well that's all from me; back to the shed.

Andy.

And from me, so as always,

Stay Lucky,

Derek

## TECH CHECK

**CAST HEADS :** The maximum size for the exhaust ports for these heads is 29.5mm. Over time these ports can erode to in excess of 29.5mm. If you have an old cast head, check the exhaust port size.

**VD REAR HUB BOLTS :** Probably not the right title, but the big cap screws that hold the rear hubs on the 90-92 VDs can break. These need to be replaced regularly.

**VD 92 :** The pins at the inboard end of the front pushrods on the 92s need to be crack tested regularly.



**FIRE EXTINGUISHER GAUGES AND TAGS :**

It will be a requirement that these must be able to be read unobstructed by covers etc.

**RAIN LIGHTS :** These must be mounted as close to the car's centre line as possible, and facing rearwards. There is no height requirement but some could certainly be mounted higher and unobstructed by rear anti-roll bar levers.

**BRAKE CALIPERS AND PISTONS :** Have you checked yours with a magnet ? They must be a ferrous material.

**ROLLOVER BAR HEIGHT :** The diagram says it all. The exceptions are class 3 cars that don't have a front roll hoop. They are measured to a forward substantial structure. The clearance is the same. If you are measured and found to be under 50mm, you will not race until the problem is fixed

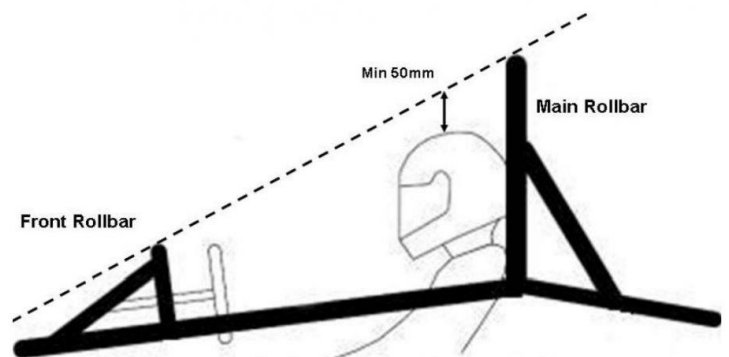


Diagram 5.1 - Open Vehicle Main Rollbar Height

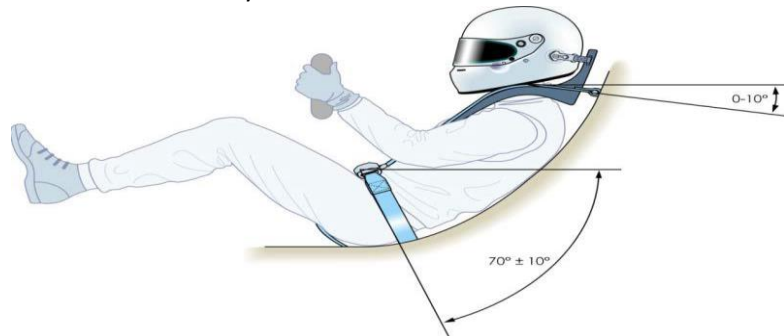
**V8 SUPERDRIVE**



# SOUTH ISLAND FORMULA FORD

**SHOCK ABSORBERS :** It will be a requirement for the '21-'22 season and beyond, for all dampers to have two only external adjusters. Three-ways may be modified so they comply. For further advice contact Peter McCallum for Penskes 0274 410 204 or Robert Taylor for Ohlins 021 825 514

**SEAT BELTS :** Are yours OK for age and height. We have, under Schedule Z, a +5yr extension to the expiry date. Safety harness shoulder straps should be installed at 0 degrees to the horizontal with angles between 0 and 10 degrees being acceptable.



**DIFF CARRIER :** Crack test, especially if it has had the die grinder at it. Shimmed up spider gears need a second thought as well.

**REVOLUTION WHEELS :** These can crack where the spokes join the rim.



## Info

**RACE NUMBERS :** Numbers are issued to drivers, not cars. The exceptions are the SIFF scholarship cars, and the NIFF HAG car, simply because of the “rental” nature of the respective arrangements. Double –ups are avoided. If you need a number, the Numbers Register is managed by Derek Wilson [adw0398@yahoo.co.nz](mailto:adw0398@yahoo.co.nz)

**SIM RACING :** Keen to have a go ?? Contact [siffsimracing@gmail.com](mailto:siffsimracing@gmail.com) for advice and information, or go to Facebook <https://www.facebook.com/Sif1600SimRacing>.

**APPAREL :** We are taking orders for a second run for “Jagger” dress shirts contact Simon Spencer-Bower [simon@wanakahelicopters.co.nz](mailto:simon@wanakahelicopters.co.nz) or Derek: [adw0398@yahoo.co.nz](mailto:adw0398@yahoo.co.nz)

**CALENDAR :** Subject to final confirmation.

SIF1600		SI Historic FF	
Ruapuna Wigram	29,30 & 31/10/21	Ruapuna	17/10/21
Levels	5/11/21		
Teretonga	4 & 5/12/21	Ruapuna	28/11/21
TBC Speedworks	14,15,16/1/22		
TBC Speedworks	21,22,23/1/22	Levels Classic	12 & 13/2/22
Levels	5/3/22		
Teretonga	19 & 20/3/22	Teretonga	19 & 20/3/22



# SOUTH ISLAND FORMULA FORD



**TRANSPONDERS** : We have a transponder for race weekend lease or possibly sale. Contact Andy 021 305 550, [jap4x4parts@gmail.com](mailto:jap4x4parts@gmail.com) or Derek 0275 001 735, [adw0398@yahoo.co.nz](mailto:adw0398@yahoo.co.nz)

**HELPERS** : We have members who could do with a hand on race weekends. If you enjoy motor racing and fancy being involved with the cars and drivers, let me or Andy know.

Derek :- [adw0398@yahoo.co.nz](mailto:adw0398@yahoo.co.nz) or Andy:- [jap4x4parts@gmail.com](mailto:jap4x4parts@gmail.com)

**MEMBERSHIP** : These are due from the 1/7/21.

A full membership (\$210) entitles the member to compete in the entire SIF1600 series.

A social membership (\$55) entitles a member to compete in one race meeting only.

The membership forms are available from Janine Yardley (SIFF Treasurer) [treasurer@siff.co.nz](mailto:treasurer@siff.co.nz)

**YOKOHAMAS**: Email [southislanddirect@gmail.com](mailto:southislanddirect@gmail.com) with the quantity, invoice details and delivery address. Delivery will be made on receipt of payment.

**SOUTH ISLAND FORMULA FORD CLUB HISTORIC SUB-COMMITTEE** : Gill Cox (chairman) Steve Foster, Mark Hamilton, Hayden Cox, Nigel Barclay, Andy Robertson, Derek Wilson

## CLASSIFIEDS

### VAN DIEMEN STEALTH

New belts, new nose cone, 2 spare radiators, 3 sets rims  
Ratios for all tracks except Hampton Downs  
Unused spare suspension arms, comprehensive spares  
Rebuilt Ohlins 2-way (front) , \$1721, invoice provided  
Ohlins on the rear. Car is race ready  
Contact Kerry Ross 021 605 360



### SWIFT SC96K

Very well prepared Class 2 car  
One meeting on fully rebuilt motor  
Spare wheels, ratios, and some suspension parts  
Aims dash, data logger, hard wired transponder  
\$28,000  
Contact Dave Saunders 0274 439 746  
email [saunders.home@xtra.co.nz](mailto:saunders.home@xtra.co.nz)



**V8 SUPERDRIVE**



# SOUTH ISLAND FORMULA FORD



## VAN DIEMEN RF05

Fresh Cooke engine  
Bilstein dampers, Lots of spare suspension,  
selection of gears, new red top battery, new belts,  
Aims dash, set of spare wheels  
Very nice car, ready to race.

\$45,000

Contact : Wayne 0274 324 771

email : colvillesigns@gmail.com



## VAN DIEMEN RF83

Spares include nosecone, brake and engine parts,  
suspension, quick lift jack, spare set of wheels  
Tidy and reliable

\$23,000

Contact : Nigel Barclay 021 490 907

email nigel@pennyhomes.co.nz



## VAN DIEMEN RF91

A front to back eighteen month restoration  
Beautifully finished. A must see.  
New Yokohamas

\$36,000

Contact John Sloane 0274 519 994



RAY GR21 Motorsport Solutions has secured an arrangement to import new GR21 Rays in kitset form, and is seeking expressions of interest. The kits are imported minus the motor, and are VERY attractively priced. Spares availability has also been arranged, again at attractive prices. Lead-in times of 16 weeks can be expected; order asap for on time delivery. Contact : John Crawford at Motorsport Solutions Ph 03 349 3600



V8 SUPERDRIVE





# SOUTH ISLAND FORMULA FORD

TrackTec Racing accelerate to the podium program has a Ray GR20 available for racing and testing , testing on the new tyre will start as soon as we get the Yokohama tyres into New Zealand ,exciting times for all as the playing field will levelled out with the introduction of these tyres

For further info contact

[matt.tracktecracing@gmail.com](mailto:matt.tracktecracing@gmail.com)



## MYGALE SJ07

Podium winning car, as raced by Kaleb Ngatoa  
New Hartley engine Lots of spares, eg. wishbones, shock springs, full gear sets wheels and tyres, nose cone, side pods. Please call for full list  
\$65, 0000 including all spares, ready to race  
Gantry and stands at additional cost  
New covered trailer at additional cost  
New complete spare Hartley motor, never used, only dyno hours at at additional cost



Contact Robbie on 021 163 6399

## JOHNSTON-HUSTLER 02-07 (1973)

Sound mechanically but needs a tidy up.

Spare suspension and wheels.

Spare nose and top body half plus molds for both.

\$20,000

Contact Phil Reed : 0272 088 633

Email : [philreed@hotmail.com](mailto:philreed@hotmail.com)



**V8 SUPERDRIVE**



# SOUTH ISLAND FORMULA FORD

BOWIN P6F 1973

1973-74 National Championship winning car (Peter Hughes)

1999-2000 National Championship winning car class 3

2013-14 National Championship winner class 3 (Royce Bayer)

Very tidy car

\$24,000

Contact Phil Reed : 0272 088 633

Email : [philreed@hotmail.com](mailto:philreed@hotmail.com)

The owner won't be racing himself and is keen to see these two cars out on the track.



VAN DIEMEN '91, '92 SIDE WINDOWS.

Hardened Acrylic and supplied with plastic pop rivets to prevent cracking. Some finishing will be required to suit individual cars. Good luck

finding these anywhere else. One order already from the UK .

\$130 / pair incl GST plus postage

Contact: John Sloane 0274 519 994

Email : [sloanedogon@xtra.co.nz](mailto:sloanedogon@xtra.co.nz)



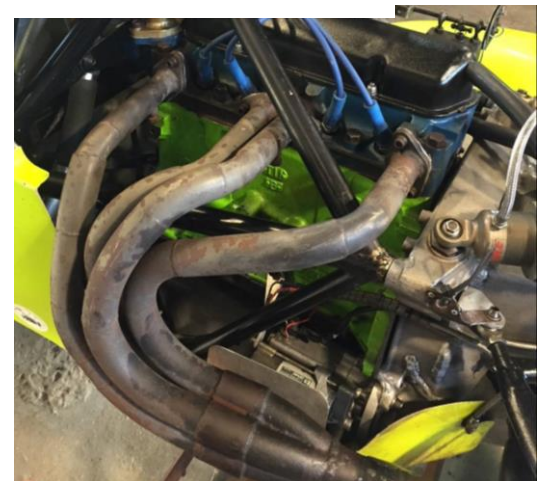
LOW PIPE 4 into 1 exhaust system to suit '90 – 92 VD

Available ex Christchurch

\$200

Contact Shane 0274 739 406

Email [ceo@cichane.co.nz](mailto:ceo@cichane.co.nz)



100mm x 100mm 12 volt 36 LED Rain Light. Exactly the same as fitted to Andy Downs' car. Very good lights that easily exceed MSNZ requirements, and look at the price.....\$61.00 incl

Phone Hornby Auto Electrical : 03 344 0170 or Malcolm : 0274 315 170



**V8 SUPERDRIVE**



**NEWFIELD AUTOS**  
CHALLENGE !



# SOUTH ISLAND FORMULA FORD



Chicane Racewear are now the NZ distributor for the high quality Radial rod ends and spherical bearings. Previously distributed by BRM Trading, the USA made rod ends start with the chrome moly high strength precision series then move to the stainless steel high strength aerospace series, both with heavy duty shank options.



Contact us now on 0800 CHICANE or go to [www.racerodends.com](http://www.racerodends.com) for more info

## Radars Motorsport

 **Performance Engine Builder** 

**For all of your engine requirements including carburettor and distributor repairs**



**House calls also available for any of those car issues that you just need a little help with**

**I am always available to help by phone /text or email**

**30 years' experience in performance engine building**

**20 years' experience in Formula ford**

**Ian Mckeown**

**021 641 681 [ijmck@orcon.net.nz](mailto:ijmck@orcon.net.nz)**

HEWLAND MK9 Gear ratios : I am looking for the following gear ratios to purchase or swap. I have some double ups

15-36 (First, either hubbed or non-hubbed)

17-33

19-31

19-33

21-29

CONTACT Grant Campbell 021 637 610 or [grant\\_a@hotmail.co.nz](mailto:grant_a@hotmail.co.nz)

**V8 SUPERDRIVE**

**Motorsport Solutions**  
New Zealand

**COLVILLE SIGNS**  
0274 324.771

**CANTERBURY MOTOR RACING SCHOOL**

**NEWFIELD AUTOS CHALLENGE !**

**Evolution**  
Motorsport

**CROSSLINK**  
  
**KIWI MOTORSPORT**

# SOUTH ISLAND FORMULA FORD



CAR STARTING TO JUMP OUT OF GEAR? Rebuilding those worn dog rings and gears is a very economical option to buying new. Further enquiries to Justin Neill Engineering

Ph 03 323 9900 Mob 027 228 0050

Email [justinneill@xtra.co.nz](mailto:justinneill@xtra.co.nz)

10 Langston Lane, Papanui, Christchurch



SEAT MOLD to suit Van Diemen RF90-92. Anyone wanting to make their own seat is welcome to borrow this mold. ALSO if anyone has any internals for a Mk5 Hewland, John Sloane would be very interested. Contact him on 0274 519 994



NON-RETURN VALVES. These are a mandatory safety item to be fitted to the breather from the fuel tank.

Proceeds go to the SIFF club. \$20.00 ea  
Contact Andy Robertson : 021 305 550



## WHEEL SPACERS

Another Keith Laney Estate item  
Unknown origin but look to be factory made, and for centre locks

Pegs are approx.. 90mm PCD for all four spacers.  
The centre hole for two is 19mm dia  
and for the second two = 30mm dia.

\$50

Contact Derek 0275 001 735

email [adw0398@yahoo.co.nz](mailto:adw0398@yahoo.co.nz)



**V8 SUPERDRIVE**



# SOUTH ISLAND FORMULA FORD



FORMULA FORD ENGINE, CLASS 1&2 freshly rebuilt for 2021 season for my Van Diemen RF03 but not used.

Specification: Alloy head, electronic ignition, Motorsport NZ inlet manifold, VD cast alloy sump (we can change to a fabricated steel sump if required)

Price \$15000

Contact: Grant Campbell 021 637610 or grant\_a@hotmail.co.nz



## AVAILABLE from MOTORSPORT SOLUTIONS

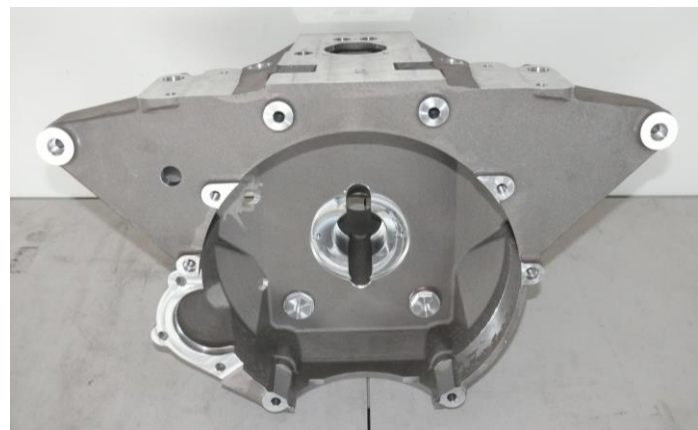


Ivey Valves Formula Ford -  
Intake \$29 + GST  
Exhaust \$39 + GST

Rebel rims in stock  
\$425 + GST



Lola 644 front uprights LH & RH  
\$850 + GST ea.



Stealth bellhousing suit\$ both SWB , LWB. POA

To keep up to date on our latest products, visit – [www.motorsportsolutions.co.nz](http://www.motorsportsolutions.co.nz)

Email: [motorsportsolutions@xtra.co.nz](mailto:motorsportsolutions@xtra.co.nz)

Phone: 03 349 3600

V8 SUPERDRIVE



# SOUTH ISLAND FORMULA FORD



BORLAND RACING DEVELOPMENTS

Hewland LD200 Steel Diff Carriers

AU \$1650

This is not an official Borland ad, but is simply to let members know that these carriers are a good option



- Small carbon-look mirrors, **\$89.10**, as per <https://www.classiccaraccessories.co.nz/collections/mirrors/products/carbon-look-racing-mirrors>

- Small black mirrors, **\$76.50** as per <https://www.classiccaraccessories.co.nz/collections/mirrors/products/black-lightweight-racing-mirrors>

- Small carbon mirrors, **\$202.50** as per <https://www.classiccaraccessories.co.nz/collections/mirrors/products/carbon-fibre-racing-mirrors>

Discount prices for SIFF members

For the discounted price please use the following link

: [www.classiccaraccessories.co.nz/formulaford](http://www.classiccaraccessories.co.nz/formulaford)



.A piece of advice from Malcolm Yardley. On these distributors the cover over the module can short out. Insulation should be fitted in the side cover. The terminals should also be insulated and possibly bent over.

For further advice

phone Malcolm 0274 315 170



DUNLOP CR82 TYRES, available direct from Dunlop Motorsport

Made in Europe \$990 incl.GST

FREIGHT

FREE to any town for a set of four

CONTACT Richard Fraser Dunlop Motorsport Manager

Goodyear and Dunlop tyres

04 528 8015 mob. 0272 795 101

Email [richardfraser@goodyear.com](mailto:richardfraser@goodyear.com)



V8 SUPERDRIVE



# SOUTH ISLAND FORMULA FORD



## STEALTH NOSECONE .



The pointy version as developed by the Leitches and used by James Penrose to win the SIF1600 and National Championships . The

margin on sales goes to the SIFF club.

\$170.00 each

Contact Andy Robertson : 021 305 550



Latest arriving, 2021 Formula Harness with either pull up or pull down side straps, quick release adjuster only available in Black \$345 plus gst



[WWW.PALMSIDE.CO.NZ](http://WWW.PALMSIDE.CO.NZ)

4 Islington Avenue

Christchurch 8042

phone 03 338 9151

V8 SUPERDRIVE



# SOUTH ISLAND FORMULA FORD

## HEAD

Cast Steel Formula Ford head  
Complete with valves , rockers etc  
as shown.  
Being replaced with an alloy head.

\$2700  
Contact Gary Love  
0274 077 879



## VELOCITY HQ RACE CAR TRAILERS

Tilt bed, unladen weight = 980kg, gross = 3000kg  
internal length 4.86m, width at wheel arch 2.09m  
height 1.83m  
Many other options including a 2 car system that works  
particularly well for F1600s



<https://www.trademe.co.nz/a/motors/trailers/tandem-axle/listing/3027769951?bof=WzVaqbH9>

Link to Two car system option

<https://www.facebook.com/watch/?v=849668015419795>

\$29,999  
Contact Adam Julian 021 304 001  
[decracing@outlook.com](mailto:decracing@outlook.com)



**Virtual Race Training**

**CARLYLE**  
PERFORMANCE LIMITED

**ACTUAL RESULTS**

**MOTIONFORCE1**  
PERFORMANCE SIMULATIONS

**f** Carlyle-Performance-Ltd  
0292 632223

**V8 SUPERDRIVE**





# SOUTH ISLAND FORMULA FORD



## UK REVOLUTION RACE WHEELS

2 sets as used on the ex Noble-Adams VD90

Very good condition

\$600 per set

Contact Nigel Arkell 029 993 3007

[narkell@mac.com](mailto:narkell@mac.com)



## Van Diemen 90-92 Parts For Sale

Top Front Wishbones x2 Standard Suspension NEW - \$250 Each

Right Front Lower Wishbone Standard Suspension NEW - \$290

Rear Top Wishbone NEW - \$280

1 Pair Springs 8inch x 150lbs (UK) NEW - \$180

1 Pair Springs 8inch x 160lbs (UK) NEW - \$180

2x Radiator Cores NEW \$300



## Gear Ratios/Parts For Sale

- Hewland Mk 8/9 Gear Ratios 20:32 NEW \$450
- Hewland Mk 8/9 Gear Ratios 20:31 NEW \$450
- Hewland Mk 8/9 Gear Ratios 25:26 AS NEW \$350
- Input Shaft For 8" Clutch (Hewland HC23917) NEW \$450

## Gear Ratios/Parts For Sale

- LD200 20:32 NEW \$450
- LD200 21:27 NEW \$450
- LD200 21:26 AS NEW \$400
- LD200 19:25 AS NEW \$400
- LD200 24:28 AS NEW \$400
- LD200 21:26 AS NEW \$400
- LD200 21:27 AS NEW \$400
- LD200 19:33 GOOD \$300
- 1x LD Dog Ring NEW \$150
- LD200 First Gear and Shaft 14:36 VERY GOOD CONDITION \$750



**Cortina 1600GT 2737E head.** New valve guides \$300

FOR ALL OF THE ABOVE Contact Bob Johnston

0210 236 5086

email: [greenpear225@gmail.com](mailto:greenpear225@gmail.com)

please note OTHER PARTS ALSO AVAILABLE





## **TDI Lightweight Aluminum Differential Carrier with Bearings**

This carrier is for Hewland mk8 & 9 gearboxes and the early LD200s

4.1 pounds

US \$619 including bearings

Google them at Pegasus. Another option.

